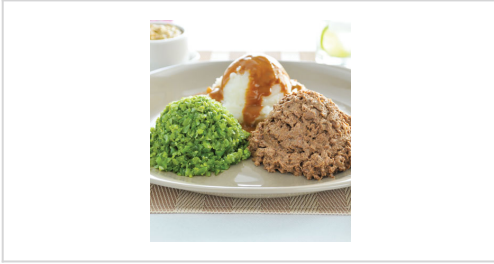




FOODSERVICE

MADE TO SERVE™



PRIMEMINCED ROAST BEEF

Case Code 27210	Pack & Size 3 x 1.7 kg
----------------------------------	---

Premium Roast Beef minced and ready to cook.

Nutrition Facts

Serving Size	100 g
Amount Per Serving	
Calories 120	Calories from Fat
% Daily Value	
Total Fat 4g	6%
Saturated Fat 2g	10%
Cholesterol 15mg	5%
Sodium 300mg	13%
Total Carbohydrate 4g	1%
Dietary Fiber 1g	4%
Sugars 2g	4%
Protein 18g	36%
Vitamin A 0%	Vitamin C 6%
Calcium 2%	Iron 15%
Vitamin E 0%	Thiamine 0%
Magnesium 0%	Zinc 0%

* Percent Daily Values are based on a 2,000 calorie diet.

Nutrition Facts are based on our current data. However, because the data may change from time to time, this information may not always be identical to the Nutrition Facts table found on the labels of products.

INGREDIENTS

Beef, Water, Textured Soy Protein, Soy Protein Isolate, Beef Fat, Flavour, Yeast Extract, Vinegar, Caramel, Soy Lecithin, Salt, Xanthan and Locust Bean Gum and Spice.

FEATURES AND BENEFITS

Safe and consistent minced roast meats are easy to prepare, simply temper, heat and serve. Less waste - use as little as 1/2 a tub.

SERVING IDEAS

Serve on its own as a delicious minced protein or accompanied by minced vegetables and mashed potatoes.

MORE

Safe and consistent minced roast meats are easy to prepare, simply temper, heat and serve. Less waste - use as little as 1/2 a tub.

PREPARATION

Temper, heat and serve according to preparation and handling instructions on the label.

HANDLING

Do not re-freeze. Do not use if film is torn or missing. Do not hold refrigerated product longer than 2 days.

STORAGE

Shelf Life: 15 months

Storage Temperature: C

PACKAGING DETAILS

Pack & Size: 3 x 1.7 kg	Case Weight: 5.45 KG	UPC: 63211272109
Cube: 0.0111 M	Case Size: 45.09CM x 27.64CM x 7.80CM (L x W x H)	SCC-14: 10063211272106