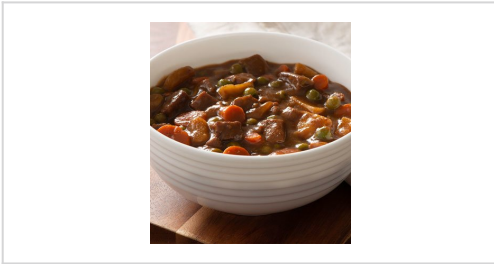




FOODSERVICE

MADE TO SERVE™

# BEEF STEW



<b>Case Code</b> <b>08743</b>	<b>Pack &amp; Size</b> <b>3 x 1.81 kg</b>
----------------------------------	--

Large pieces of chunky beef with a full serving of vegetables in a thick rich broth.

## Nutrition Facts

Serving Size	290 g
Amount Per Serving	
Calories 220	Calories from Fat
% Daily Value	
<b>Total Fat</b> 7g	<b>11%</b>
<b>Saturated Fat</b> 2g	<b>10%</b>
<b>Cholesterol</b> 40mg	<b>13%</b>
<b>Sodium</b> 1150mg	<b>48%</b>
<b>Total Carbohydrate</b> 25g	<b>8%</b>
Dietary Fiber 3g	<b>12%</b>
Sugars 5g	<b>10%</b>
<b>Protein</b> 15g	<b>30%</b>
Vitamin A 8%	Vitamin C 4%
Calcium 2%	Iron 15%
Vitamin E 0%	Thiamine 0%
Magnesium 0%	Zinc 0%

\* Percent Daily Values are based on a 2,000 calorie diet.

Nutrition Facts are based on our current data.

However, because the data may change from time to time, this information may not always be identical to the Nutrition Facts table found on the labels of products.

## INGREDIENTS

Water, Seasoned Beef (beef, water, modified corn starch, salt, sodium phosphate), Rehydrated Potatoes(sodium phosphate), Carrots, Peas, Beef Flavour (yeast extract), Modified Corn Starch, Canola or Soybean Oil, Enriched Wheat Flour, Sugar, Salt, Onion Powder, Caramel, Dehydrated Garlic and Spice.

## FEATURES AND BENEFITS

Consistent, finest quality, oven ready. Just heat & serve. Save time and labour with Campbell's Entrees.

## SERVING IDEAS

Serve alone as a main course. For added flavour add diced tomatoes or ham.

## PREPARATION

Cooking Directions. Remove plastic film. 1) Place 1 tray (2 blocks) of product in pot. Cover. Do not add water. 2) Heat (min. 80C/ 180F), stirring occasionally. 3) Reduce heat (70C/ 160F) and cover. Stir periodically.

## HANDLING

Do not re-freeze. Do not use if film is torn or missing. Do not hold refrigerated product longer than 2 days.

## STORAGE

Shelf Life: 21 months

Storage Temperature: C

## MORE

Consistent, finest quality, oven ready. Just heat & serve. Save time and labour with Campbell's Entrees.

## PACKAGING DETAILS

<b>Pack &amp; Size:</b> 3 x 1.81 kg	<b>Case Weight:</b> 5.90 KG	<b>UPC:</b> 63211087437
<b>Cube:</b> 0.0111 M	<b>Case Size:</b> 45.09CM x 27.64CM x 7.80CM (L x W x H)	<b>SCC-14:</b> 10063211087434